



# What's New in Autodesk® Constructware® – 2014 Release

Autodesk® Constructware® web-based project management software enables construction firms and owners to standardize and optimize business processes in order to deliver projects more efficiently.

Constructware connects people, information, and processes to help streamline operations, manage change, and optimize execution in the field. Greater project transparency and accountability improve insight across projects of all sizes.

Gain more accurate near time cost visibility with the ability to exchange project data with accounting systems. And the configurable web-based software as a service (SaaS) platform can help to reduce costs associated with implementing and managing an IT infrastructure.

## Cross browser support

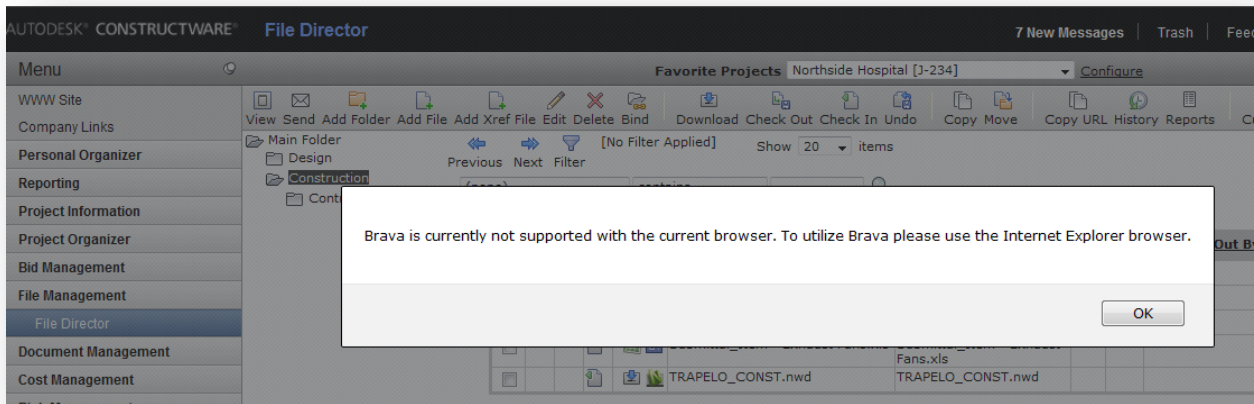
With Constructware 2014, multiple browsers are supported. This includes such browsers as Safari®, Firefox® and Chrome® and Internet Explorer®.

There are a few areas within Constructware that still utilize Microsoft's Active X control. They include:

- Brava! viewer
- Autodesk® Navisworks® viewer
- Custom Reports: creating and editing of custom reports. You will still be able to view custom reports with any browser.

These three applets utilize Microsoft controls (Active X, etc.) which only work with Microsoft's Internet Explorer.

Users attempting to view documents with the Brava! viewer or Navisworks viewer will be show a message (Figure 1) saying that it is not supported with the current browser and to utilize Internet Explorer.

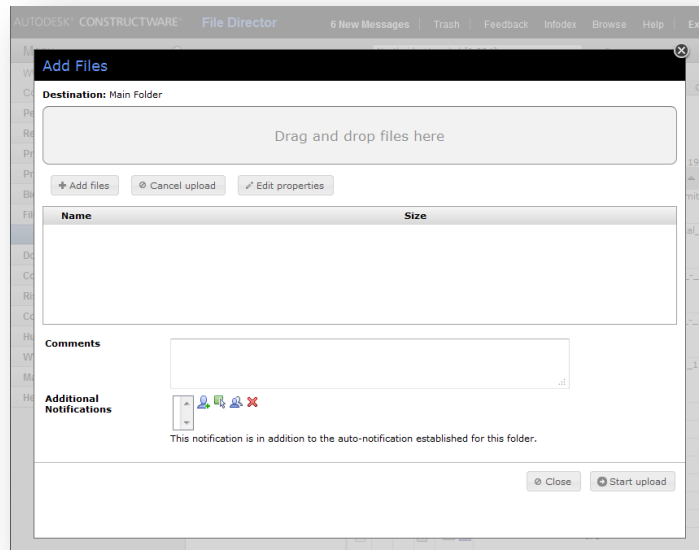


**Figure 1.** Attempting to use Brava! with a non-supported browser

Constructware recommends the use of Microsoft Internet Explorer 10. This provides the ability to use the few remaining Active X controls within Constructware and also utilize the latest HTML5 control. You can download Internet Explorer 10 at: <http://windows.microsoft.com/en-us/internet-explorer/downloads/ie-10/worldwide-languages>

## File Director – New file upload control

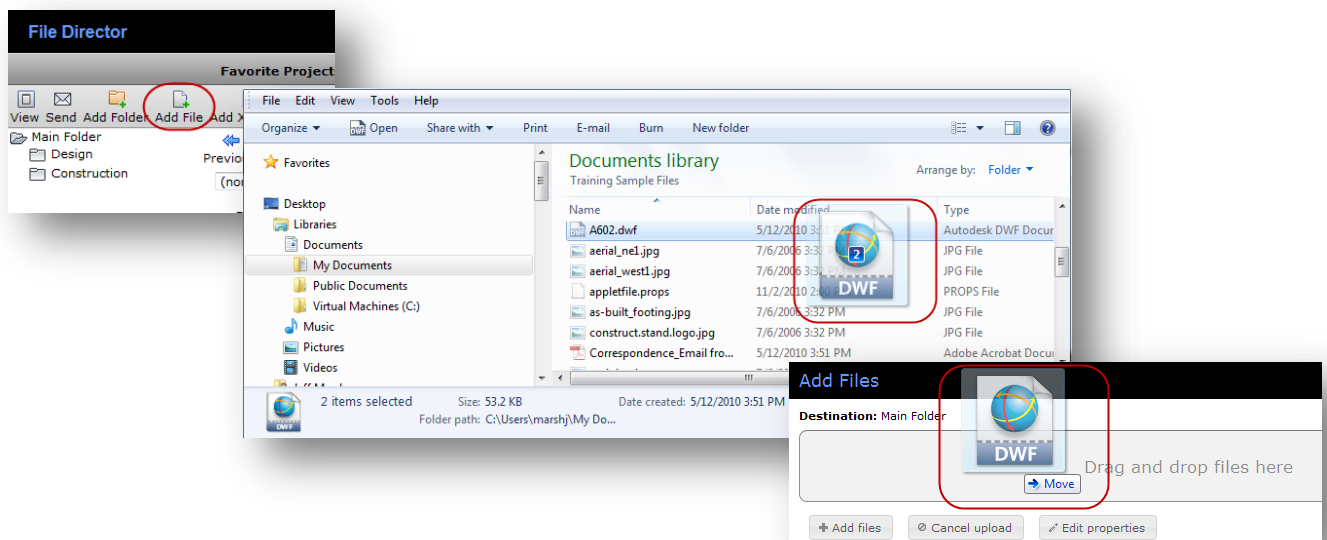
Constructware 2014 introduces a new file upload control within File Director utilizing HTML5. Previously this was an Active X control applet. The benefits of this new control are larger file uploads without timeouts. It accomplishes this by utilizing chunked file uploads. By utilizing this control, the potential upload file size is unlimited. Another benefit is if your current browser supports HTML5, you can drag and drop files into the file upload menu.



**Figure 2.** File Director upload control

### Upload a file(s) to File Director

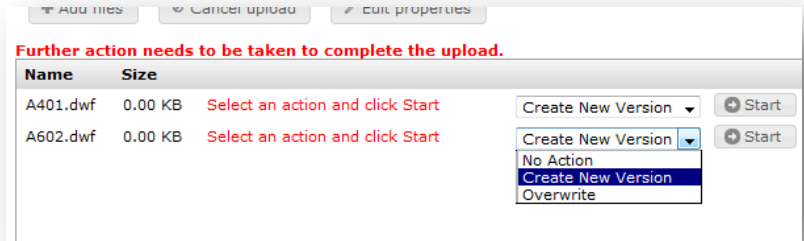
Select the folder to upload files and then click the 'Add File' icon. The upload window will appear (Figure 2). Drag and drop the files into the 'Drag and Drop files here' menu area. You can continue to drag additional files to this area until all files have been selected. By utilizing the 'Add files icon, you can also upload files by the previous upload method by browsing your hard drive or local area network and select the file(s) to upload. When ready, select 'Start Upload'. Files can also be uploaded individually by clicking 'Start' next to the file name. Click 'Close' when all necessary action has been taken.



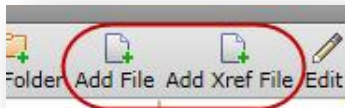
**Figure 3.** Uploading files to File Director

If the file already exists you will be prompted to select an additional action (Figure 4). The available options include:

- No Action
- Create a new version
- Overwrite (if file overwriting is allowed)



**Figure 4.** Further action for existing files



**Figure 5.**

The File Director icon menu has been updated with a new 'Add Xref File' (Figure 5) icon as the file upload function has been separated into two functions. As previously discussed, when clicking the 'Add File' icon, the HTML5 control will be utilized. Previously this was an Active X applet.

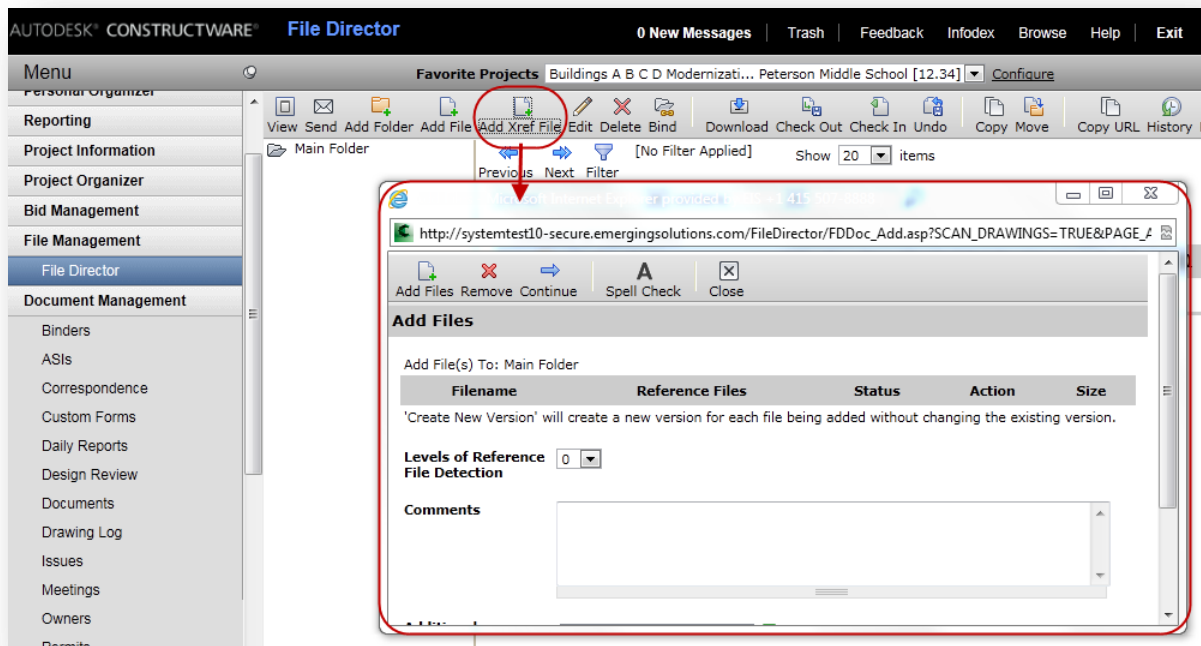
When selecting the 'Add Xref File' icon this will load the Xref Java applet. In the past some customers have used this applet vs. the old Active X control applet due to IT restrictions. This applet has not changed it simply has been separated into its own function.

**Important Note:** For users not using HTML5 browsers (Internet Explorer 9 and lower, etc.):

- The new applet will load but will not allow the dragging dropping of files into the applet. You will have to add files by browsing using the "Add files" function.
- You will not be able to select multiple files at one time. You can upload multiple files, but the selection of those files is done one file at a time.

**Hint**

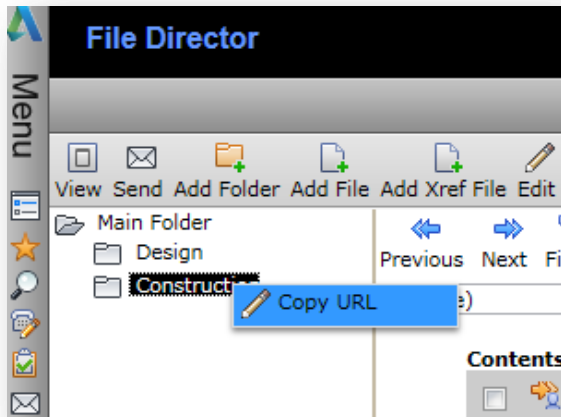
- To retain the ability to choose and upload multiple files, users can utilize the old upload utility by selecting the 'Add Xref File' icon. By selecting this option, the old upload utility will be loaded. Just as before, if the user selects '0' this will load the Active X upload control. If they select '1, 2, 3, 4 or All', it will load the Java upload control (Figure 6).



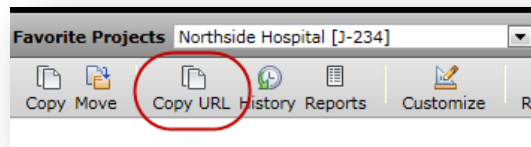
**Figure 6.** Add Xref file in File Director

## File Director – Direct link URL to folders

With Constructware 2014, you can now copy the URL (uniform resource locator) of a folder within file director to share with other Constructware users.

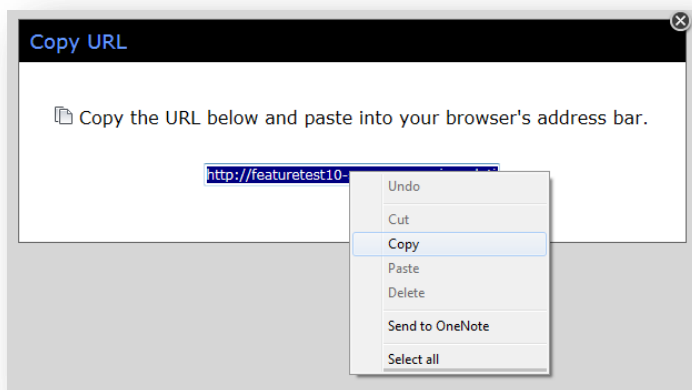


**Figure 7.** Copy URL with right mouse button



**Figure 8.** Copy URL icon

You can get the URL by one of two methods. First, by selecting the right mouse button over the folder, the 'Copy URL' will appear (Figure 6). Second, by selecting the folder and then clicking the "Copy URL" icon located in the File Director icon menu (Figure 7).



**Figure 9.** Copy URL into clipboard

After clicking the 'Copy URL', a window will be displayed allowing the user to copy the folder's URL into the computer's clipboard. The user can use the keyboard shortcut (CTRL + C) or they can right click on the URL and select 'Copy' (Figure 8).

A user receiving the URL can click on the URL and they will be taken directly to the folder within File Director after logging into Constructware

## Drawing Log – Ability to download multiple files

Previously users were only able to download one file at a time. With Constructware 2014, a multiple file download controls has been added to the Drawing Log. With the new control, you can download up to 50 files at a time.

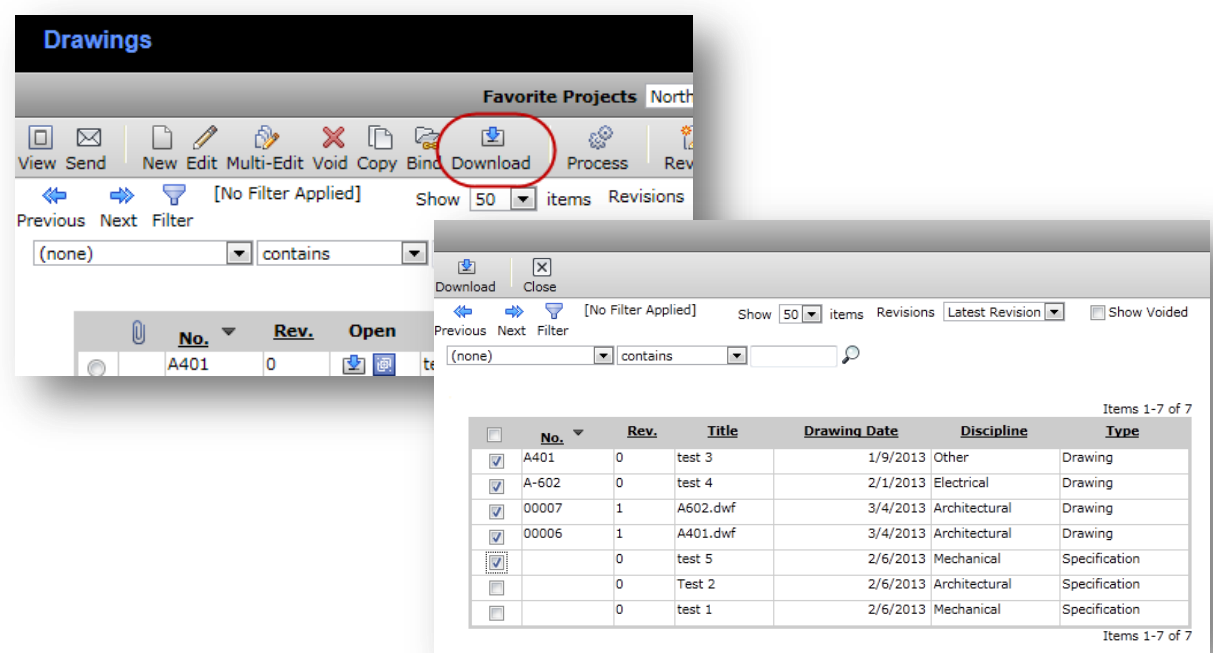


Figure 10. Download multiple files from Drawing Log

Once the download window opens, you can filter the items and select the revision to quickly narrow down the number of items being displayed. Once you have narrowed down the items, place a check next to the items you wish to download and click 'Download'. You will be prompted to select a location to store the files locally.

Autodesk® Constructware® [and other products] are registered trademarks or trademarks of Autodesk, Inc., and/or its subsidiaries and/or affiliates in the USA and/or other countries. All other brand names, product names, or trademarks belong to their respective holders. Autodesk reserves the right to alter product and services offerings, and specifications and pricing at any time without notice, and is not responsible for typographical or graphical errors that may appear in this document.

© 2013 Autodesk, Inc. All rights reserved.