

Autodesk® Constructware®
2013

What's New in Autodesk® Constructware® – 2013 r2 Release

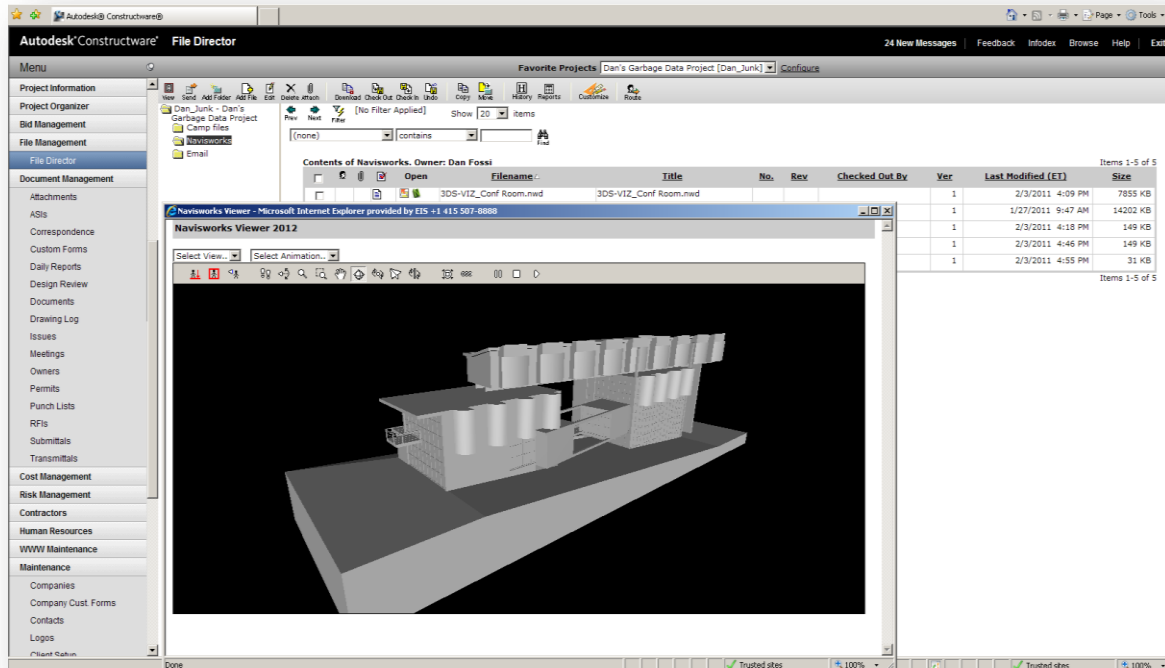


Figure 1. Autodesk® Constructware® 2013

Autodesk® Constructware® web-based project management software enables construction firms and owners to standardize and optimize business processes in order to deliver projects more efficiently.

Constructware connects people, information, and processes to help streamline operations, manage change, and optimize execution in the field. Greater project transparency and accountability improve insight across projects of all sizes.

Gain more accurate near time cost visibility with the ability to exchange project data with accounting systems. And the configurable web-based software as a service (SaaS) platform can help to reduce costs associated with implementing and managing an IT infrastructure.

New Module: Trash

With the 2012 R2 release of Constructware, the Constructware team has created the Trash module. This module allows the administrator or user to:

- Permanently Delete files deleted from File Director
- Restore files accidentally deleted from File Director

Permissions

The Trash module permissions are located in the Maintenance tab under the Data Maintenance section. The Trash module has the following permissions (Figure 2):

- **Administrator** - User can permanently delete and restore all files deleted from File Director.
- **Own Only** - User can only delete and restore files that they deleted from File Director.
- **None** - User cannot access the Trash module.

Note: Remember to update your company's Profiles so newly created users can access this new functionality.

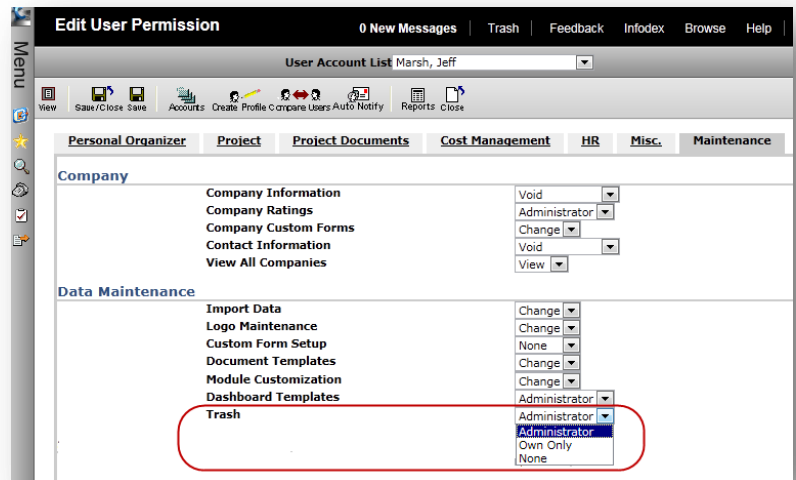


Figure 2. Trash Permissions

Once the Trash module is enabled for the individual user, it can be accessed in the upper toolbar (Figure 3).



Figure 3. How to access the Trash module

Accessing the module, the user will be presented with the Trash log for the particular project that is selected in the favorite project dropdown (Figure 4). To access the trash log for other projects, the user selects the appropriate project from the favorite project dropdown.

Actions that can be taken from Trash Log

- Permanently delete folders or files
- Restore folders or files to File Director

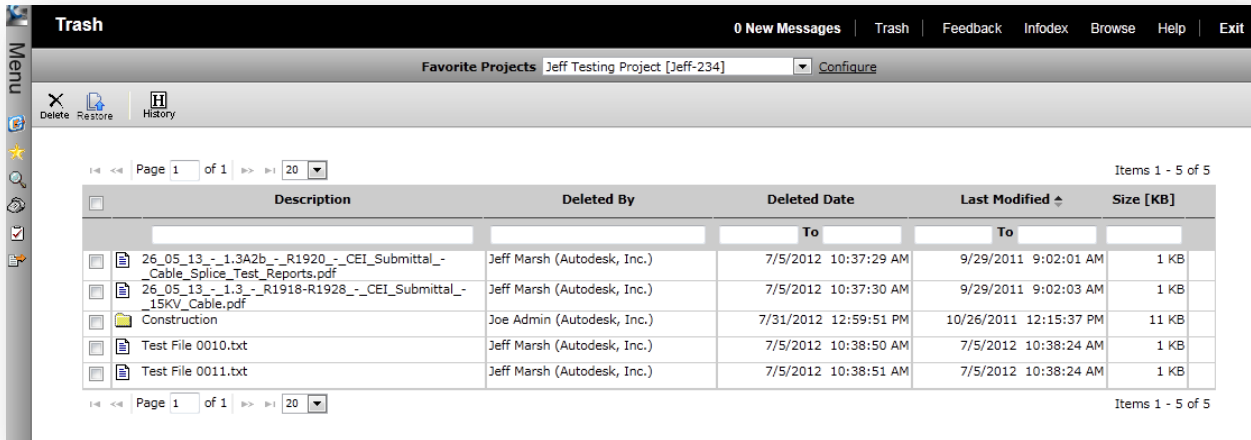
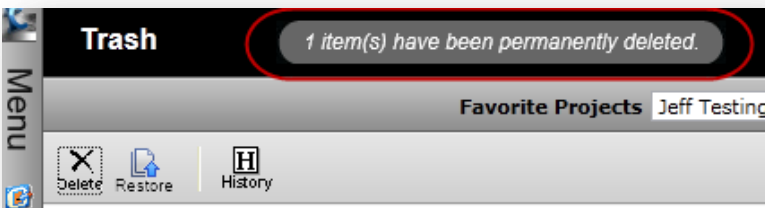


Figure 4. Trash Log

Permanently Delete or Restore

To take action on an item in the trash log, select the folder or file and click the appropriate icon, delete or restore. A user can also select multiple items to delete by placing a check in the box next to the item. Also note that a user can right click on an item to delete or restore an individual item.



Once the file is permanently deleted or restored, a Notification bubble will briefly appear in the upper toolbar telling the user that the action has completed (Figure 5).

Figure 5. Notification bubble

Note: Files located in the Trash module will go against a client's total storage allocation. Files must be permanently deleted before they will not be counted against a client's total available storage.

View properties

When a user right clicks on an item in the Trash log, they have the ability to view the properties of the file.

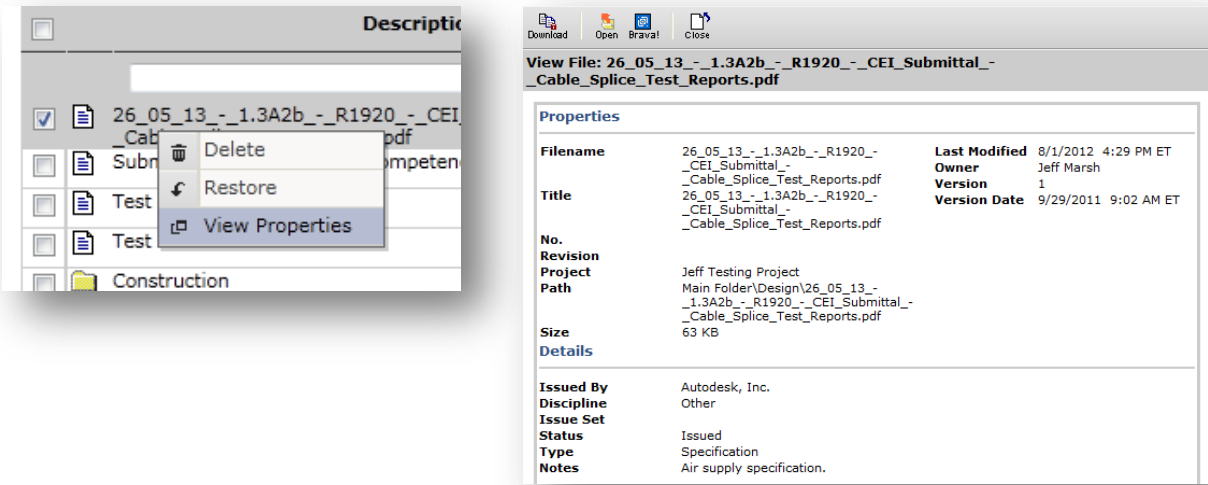


Figure 6. View Properties

History

The history log is a history of any action taken in the trash module. The three actions that are captured in the History Log are:

- Deleted from File Director
- Permanently Deleted from Trash
- Restored to File Director

For example if a user restores 2 files and a folder to file director the log will show this as one action (Figure 7).

Trash			
0 New Messages Trash Feedback Infodex Browse Help			
View Log			
Page 1 of 1 500 Items 1			
Action	Action By	Date	Notes
Permanently Deleted from Trash	Joe Admin (Autodesk, Inc.)	7/31/2012 1:00:52 PM	Event completed: 1 items succeeded, 0 failed.
Deleted from File Director	Joe Admin (Autodesk, Inc.)	7/31/2012 12:59:51 PM	Event completed: 2 items succeeded, 0 failed.
Restored to File Director	Joe Admin (Autodesk, Inc.)	7/31/2012 12:59:18 PM	Event completed: 2 items succeeded, 0 failed.
Permanently Deleted from Trash	Joe Admin (Autodesk, Inc.)	7/31/2012 12:50:56 PM	Event completed: 1 items succeeded, 0 failed.
Deleted from File Director	Joe Admin (Autodesk, Inc.)	7/31/2012 12:33:28 PM	Event completed: 2 items succeeded, 0 failed.
Restored to File Director	Jeff Marsh (Autodesk, Inc.)	7/5/2012 10:39:12 AM	Event completed: 3 items succeeded, 0 failed.
Deleted from File Director	Jeff Marsh (Autodesk, Inc.)	7/5/2012 10:38:48 AM	Event completed: 6 items succeeded, 0 failed.
Deleted from File Director	Jeff Marsh (Autodesk, Inc.)	7/5/2012 10:37:28 AM	Event completed: 2 items succeeded, 0 failed.
Deleted from File Director	Jeff Marsh (Autodesk, Inc.)	7/5/2012 10:37:11 AM	Event completed: 1 items succeeded, 0 failed.

Figure 7. History Log

Updated Help: Wiki

With the 2012 R2 release of Constructware, the online help has been updated to a wiki. With the addition of wiki elements, it gives the Constructware community a new tool for sharing knowledge. It also helps promote the following:

- It enables contribution, so the best user-generated information can be accessed from within Help.
- It enables comments, so users can engage in a dialogue with other Constructware users.
- It enables peer-to-peer learning, which is the style of learning our users strongly prefer.

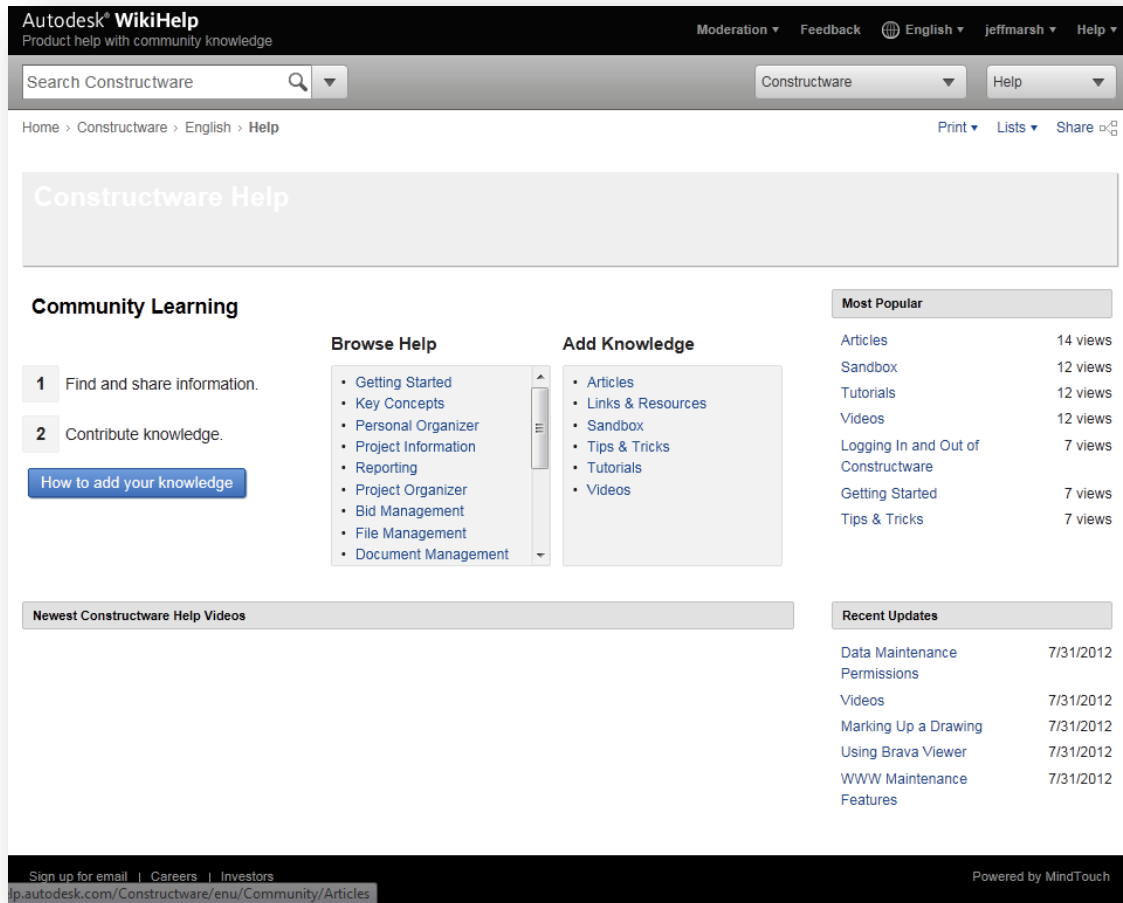


Figure 8. Constructware Wiki Help

For more information on contributing content to the site [click here](#).

The new help wiki can be accessed at the following link: <http://wikihelp.autodesk.com/Constructware/enu/Help>

Integration with Autodesk BIM360

With the 2012 R2 release of Constructware, integration between Autodesk's BIM360 Glue and Constructware has been created. This allows users to have integrated workflow, supporting the Request for Information (RFI) and Issues workflow.

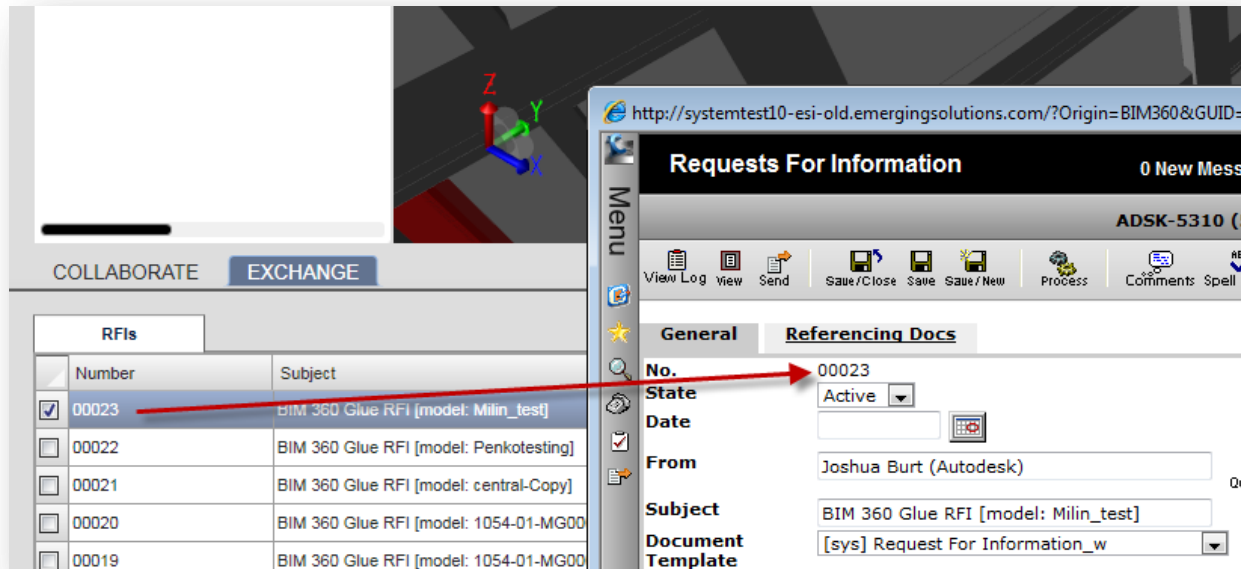


Figure 9. BIM360 and RFIs in Constructware

For more information on setting up the interface between Autodesk BIM360 and Constructware [click here](#).

For more information about BIM 360 Glue, see [BIM 360 Glue wikihelp](#).

Increase of File Storage from 1GB to 5GB

Prior to the August release, each user account would equal 1 GB of available storage within File Director. For example, a customer with 5 users would have 5GB (5 users x 1GB) of total available storage within File Director.

With the August release, the storage has been increased from 1GB to 5GB per user. For example, a customer with 5 users, the total storage has been increased from 5GB to 25GB!

To how much available storage your site has available, run the File Director Utilization Summary report. The storage statics for your site will be listed in the upper left hand corner of the report (Figure 10).

File Director Utilization Summary						
Maximum No. of Lockers: 5 Maximum Storage (MB): 25,700 Current Storage (MB): 526 Current Storage (%): 2.05						
Folder	No. of Current Versions	Total No. of Files	No. of Team Members	No. of Groups	Size (KB)	% of Maximum Storage
Resort and Spa [98000]						
98000 - Resort and Spa	17	20	6	0	5,343.00	.02
Drawings	4	4	6	0	7,017.00	.03
Architectural	11	16	6	0	19,205.00	.07
Civil	3	3	6	0	506.00	.00
Mechanical	3	3	6	0	1,039.00	.00
Civil	0	0	0	0	0.00	.00

Figure 10. File Director Utilization Summary Report

Note: "No. of Lockers" will equal the maximum number of users that can access your Constructware site.

Miscellaneous Improvements

File Director – Use of illegal characters for folder name

In the past a folder in File Director could contain the following characters \ / : * ? " < > |. The Windows OS does not allow the creation of folders with these illegal characters. Since users have the ability to exchange files in File Director via the [WebDAV](#) API, the ability to have these characters is causing errors when implementing WebDAV for clients.

As of this release, a user will no longer be able to create or edit folders within File Director with the following characters: \ / : * ? " < > | Any existing folder with the illegal characters will not be changed. For more information on the WebDAV API please [click here](#).

Design Review – Ability to create document templates

With the August release, administrators can create document templates for the Design Review module.

Autodesk® Constructware® [and other products] are registered trademarks or trademarks of Autodesk, Inc., and/or its subsidiaries and/or affiliates in the USA and/or other countries. All other brand names, product names, or trademarks belong to their respective holders. Autodesk reserves the right to alter product and services offerings, and specifications and pricing at any time without notice, and is not responsible for typographical or graphical errors that may appear in this document.