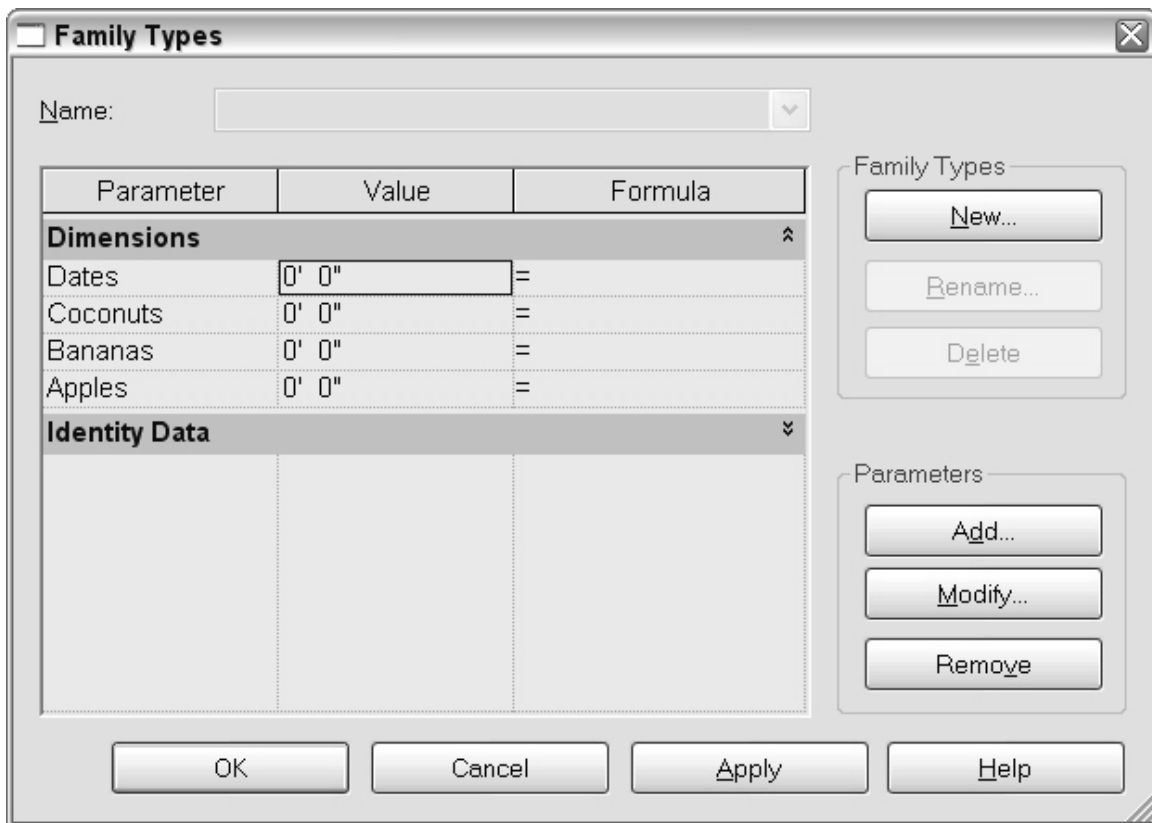


How to Order Revit Parameters

Let's say we are starting with the following parameters and we want to add a "Zebras" parameter above the Bananas parameter



Step 1 - Rename the parameter that is directly below where you want to add your parameter. Add an asterisks at the beginning of its name. Hit the Apply button.

Parameter	Value	Formula
Dimensions ^		
Dates	0' 0"	=
Coconuts	0' 0"	=
*Bananas	0' 0"	=
Apples	0' 0"	=

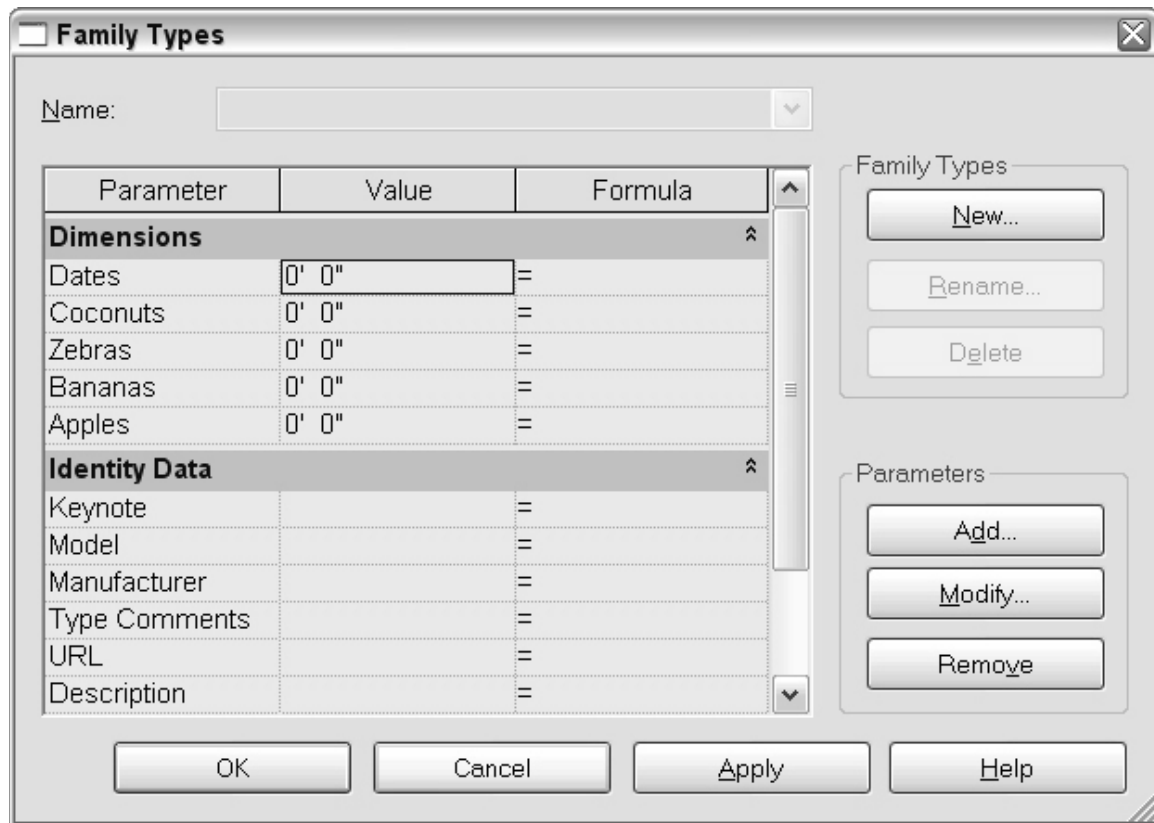
Step 2 – Add your new parameter naming it exactly the same name as the one you just renamed but with a number appended to the end it. Hit the Apply button.

Parameter	Value	Formula
Dimensions ^		
Dates	0' 0"	=
Coconuts	0' 0"	=
*Bananas2	0' 0"	=
*Bananas	0' 0"	=
Apples	0' 0"	=

Step 3 - Rename the new parameter to anything you like.

Parameter	Value	Formula
Dimensions ^		
Dates	0' 0"	=
Coconuts	0' 0"	=
Zebras	0' 0"	=
*Bananas	0' 0"	=
Apples	0' 0"	=

Step 4 – Take the asterisks off of the end of the first parameter. Hit the Apply button.



If you are working on a family in which you haven't renamed any of the parameters since you originally created them, then you can dispense with adding the asterisks in Step 1 above. However, once you have renamed a parameter or two, the ordering of new parameters becomes somewhat unpredictable. Adding the asterisks in Step 1 works like a skeleton key opening up space in between the parameters above and below.

Enjoy!